

1/4 THK. 6061 T-6
ALUM. PLT.

1/2" THK. 6061 T-6
ALUM. PLT.

Dwg.

NOTES:

CHAIN PLT. BOND COMPOSITION:

- 1, 3 OZ MAT
- 1, 16 OZ ROVING
- 1, 3 OZ MAT
- 1, 16 OZ ROVING



ERICSON YACHTS

1231 Deane Ave., Santa Ana, Calif. 92705

SCALE: 1"=1'-0"

9/26/75

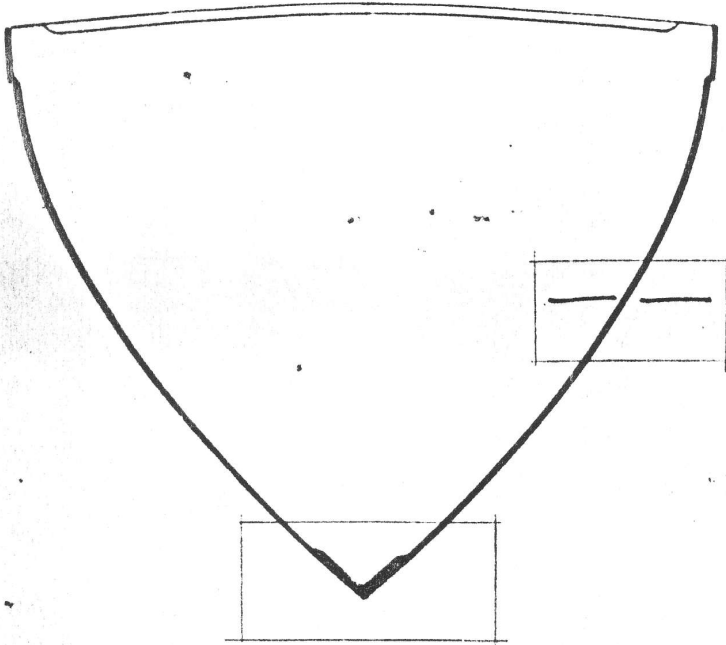
E-39 CHAIN PNTS.

E-39 HULL COMPOSITION
STANDARD HULL



ERICSON YACHTS

1931 Deere Ave., Santa Ana, Calif. 92708

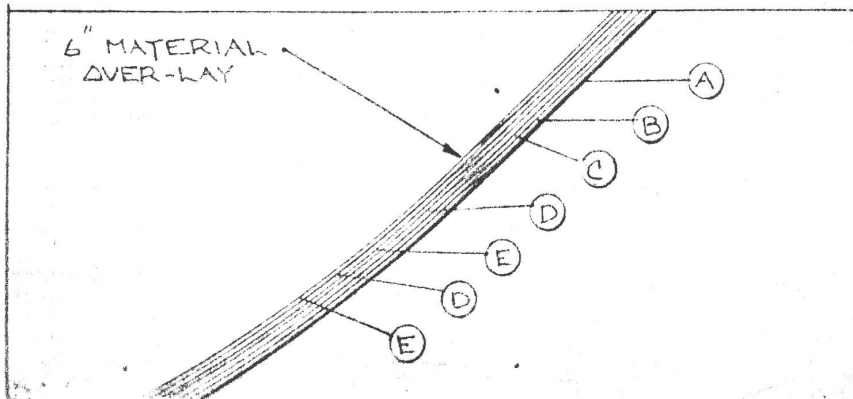
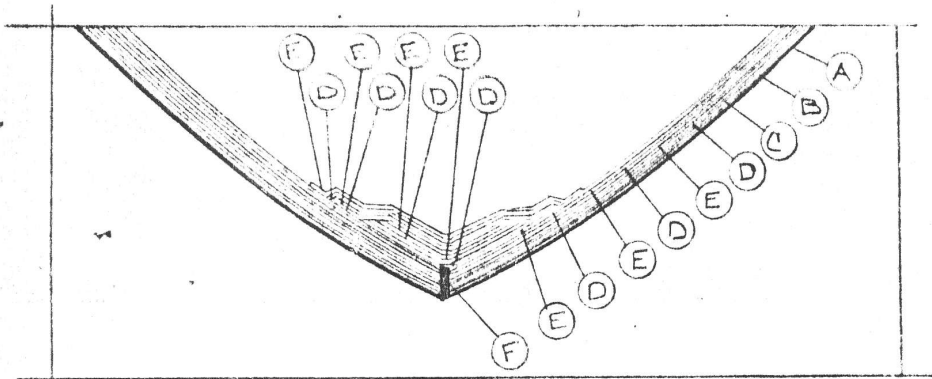


5/16" - 11/32"

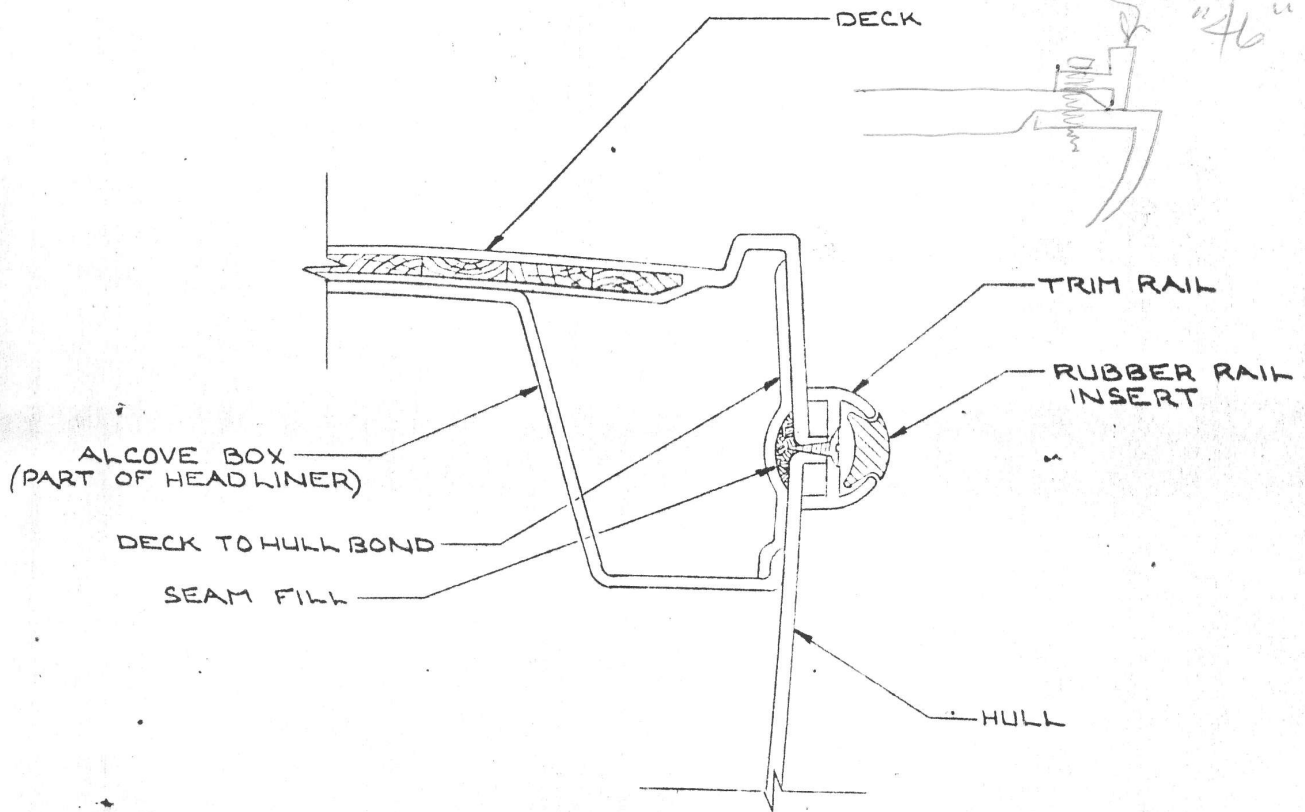
.315 - .365

- (A) - GEL COAT
- (B) - 2 OZ MAT
- (C) - 7 1/2 OZ CLOTH
- (D) - 3 OZ MAT
- (E) - 16 OZ ROVING
- (F) - REINFORCED
POLYESTER RESIN

TYPICAL BOW STATION



— TYPICAL DECK/HULL SEAM —
— E 39



CROSS SECTION OF TYPICAL DECK/HULL SEAM

NOTES:

DECK TO HULL BOND COMPOSITION —

1, 3 OZ MAT

1, 7½ OZ CLOTH

1, 3 OZ MAT

1, 7½ OZ CLOTH

THE DECK/HULL SEAM FILL MATERIAL
IS A REINFORCED POLYESTER RESIN.



ERICSON YACHTS

1031 Deere Ave., Santa Ana, Calif. 92705